



ebc

DESIGN AND INTERIOR DESIGN



Eulàlia Borrut Casas counts on an expertise of longer than twenty-five years in the design of spaces. Her academic training in Fine Arts, along with her passion and dedication to Art, add a very special sensitivity to the projects which she creates. A perfect unison of creativity and functionality is devised to obtain singular projects, which take shape in spaces with strong personality, to live and enjoy.

Eulàlia Borrut Casas has a degree in Fine Arts and Interior Design.

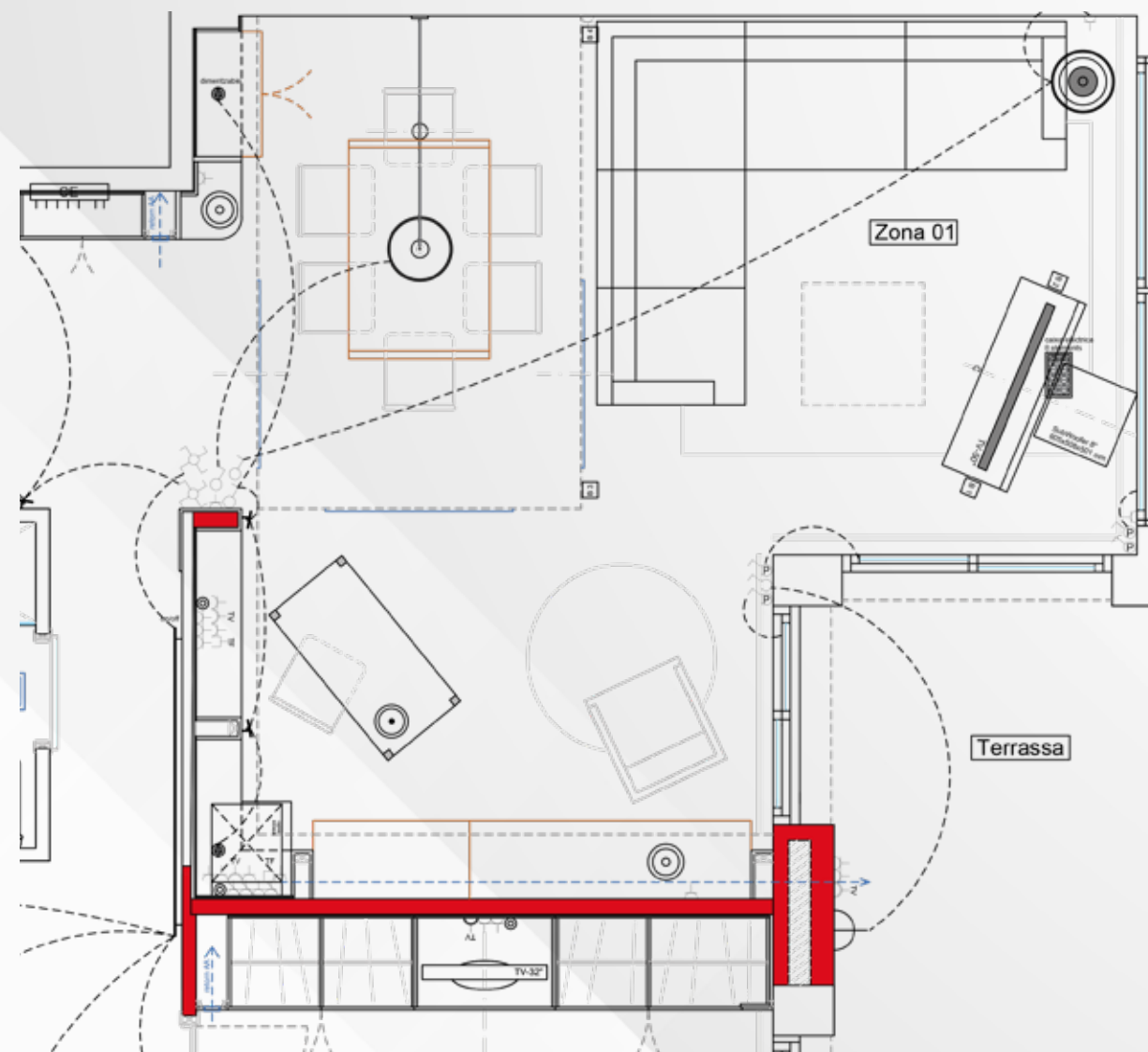


Desing to live
and to share

A 500 m² detached house.
Design and Interior Design-
Geobiology-Feng Shui

Harmony and comfort

A 130 m² apartment.
Design and Interior
Design-Geobiology

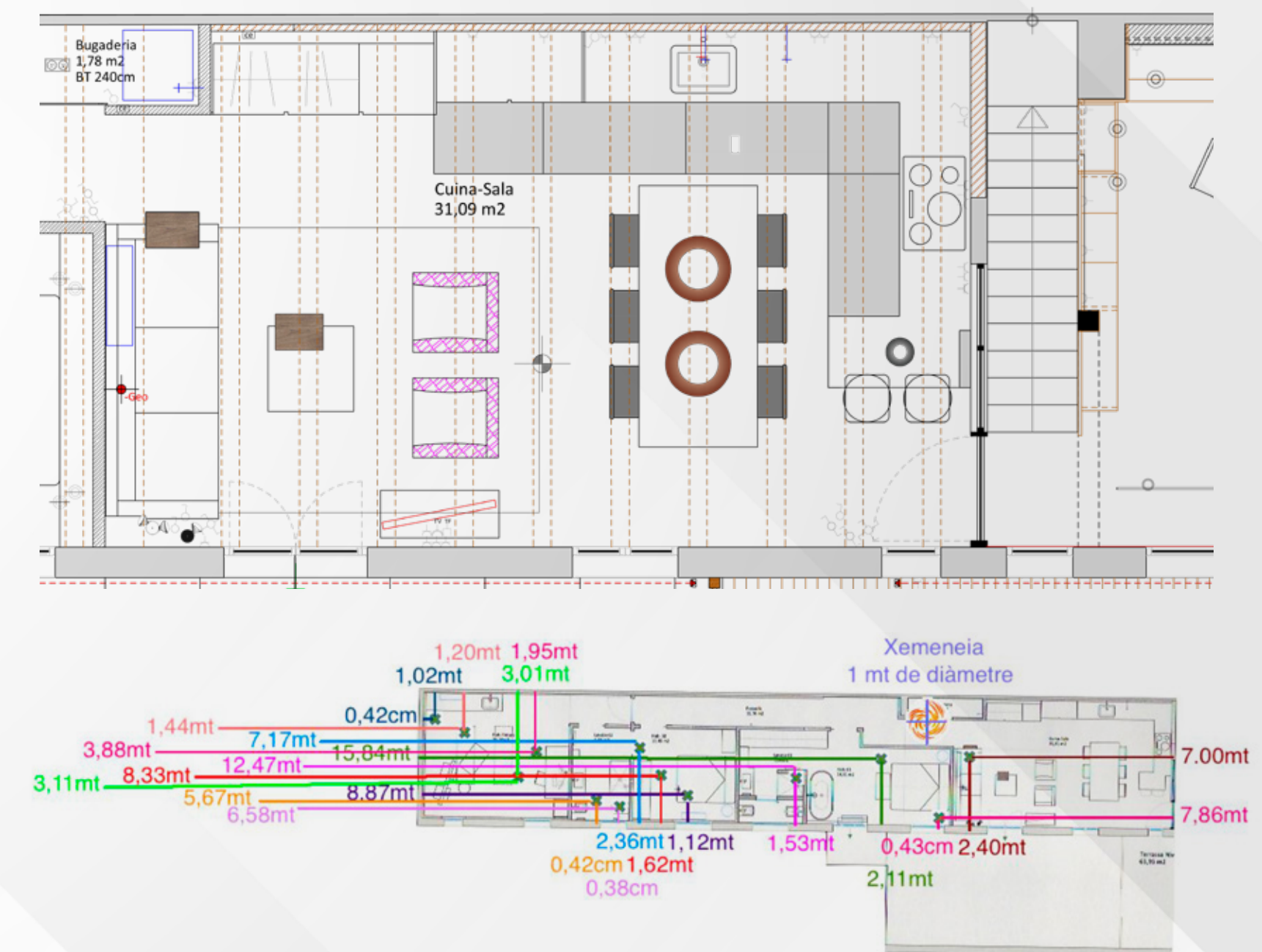




A 360 m² loft.
Design and Interior
Design-Geobiology
-Feng Shui



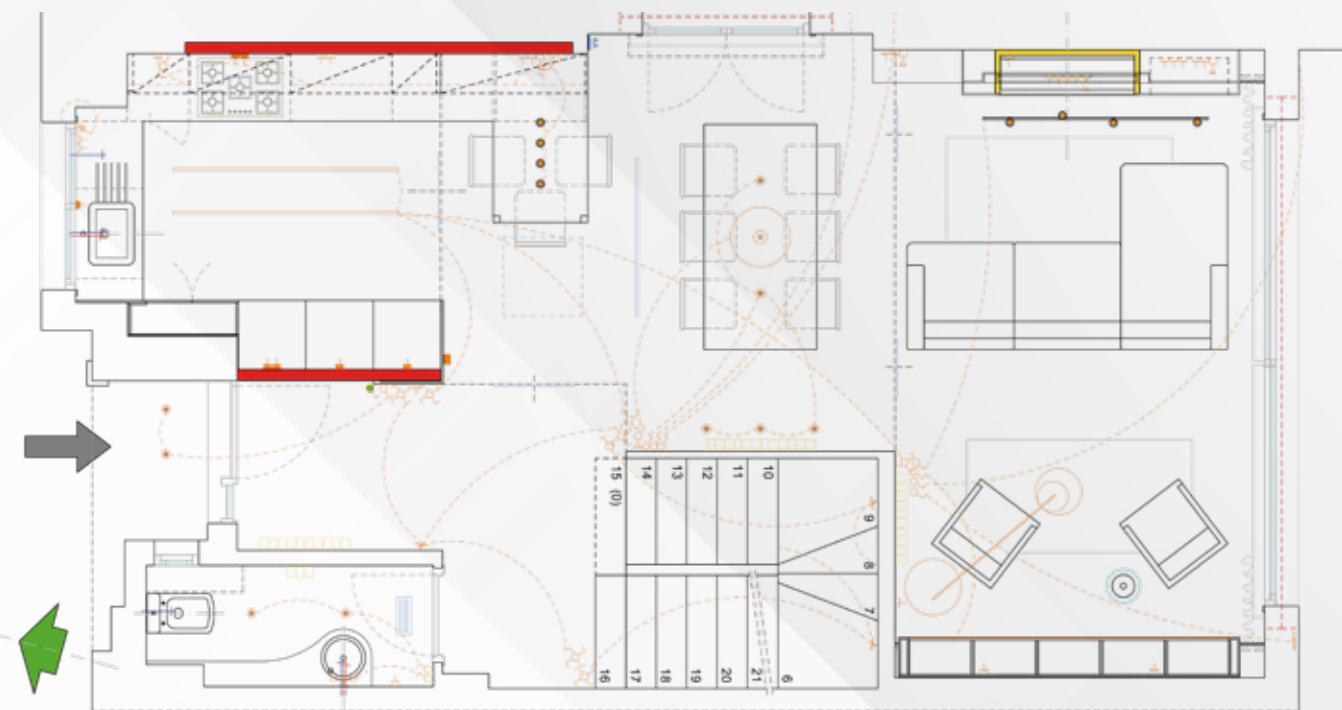
Creating unique
and personalized spaces



Geobiology study

Cozy environments, warm surroundings

A 210 m² terraced house.
Design and Interior
Design-Geobiology



Colour, light, shape



A 96 m² apartment.
Design and Interior Design-
Geobiology-Feng Shui



A 500 m² detached house.
Design and Interior Design-
Geobiology-Feng Shui

More than a kitchen



A 500 m² detached house. Design and Interior Design-Geobiology-Feng Shui

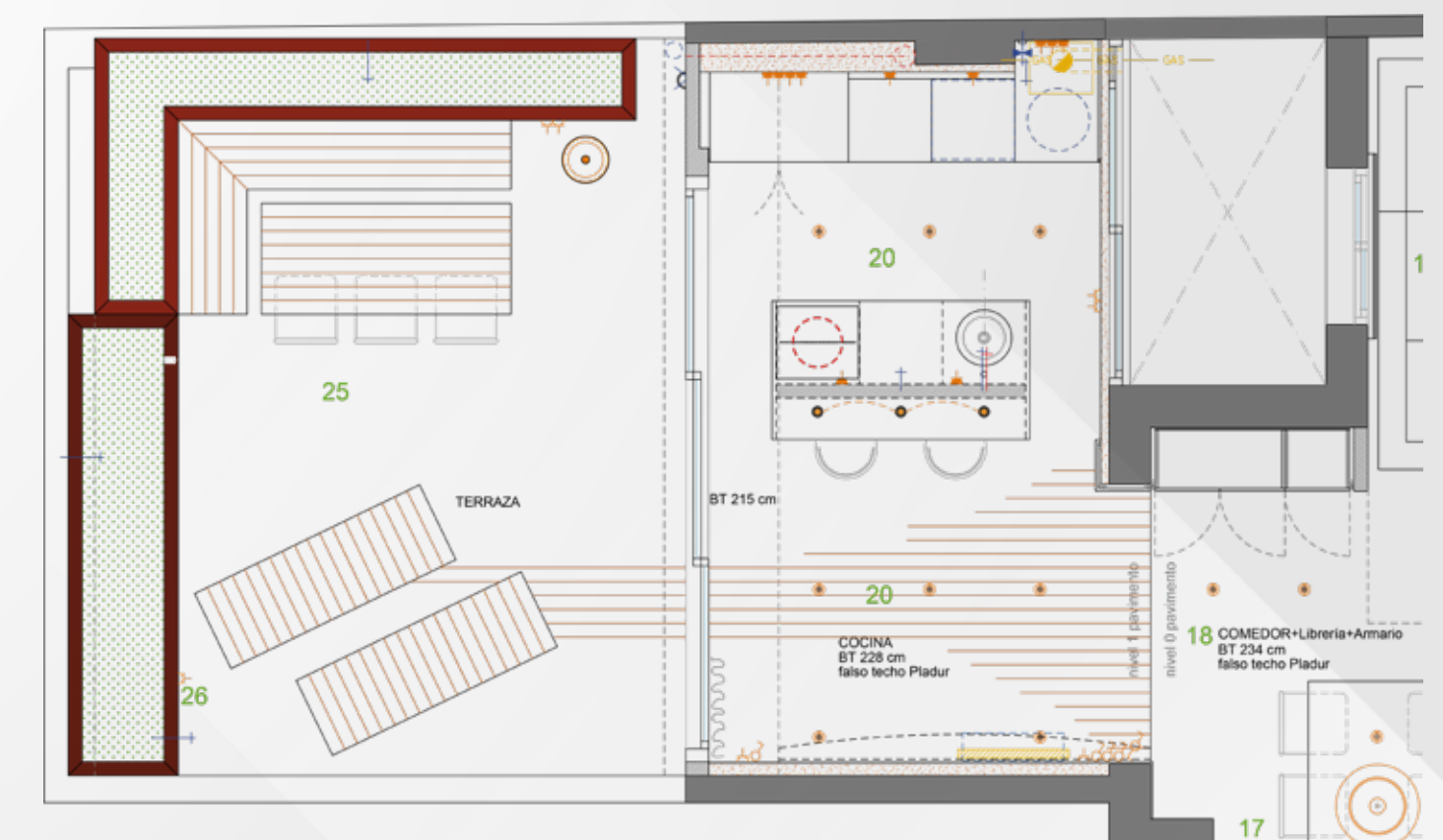


A 360 m² loft. Design and Interior Design-Geobiology-Feng Shui

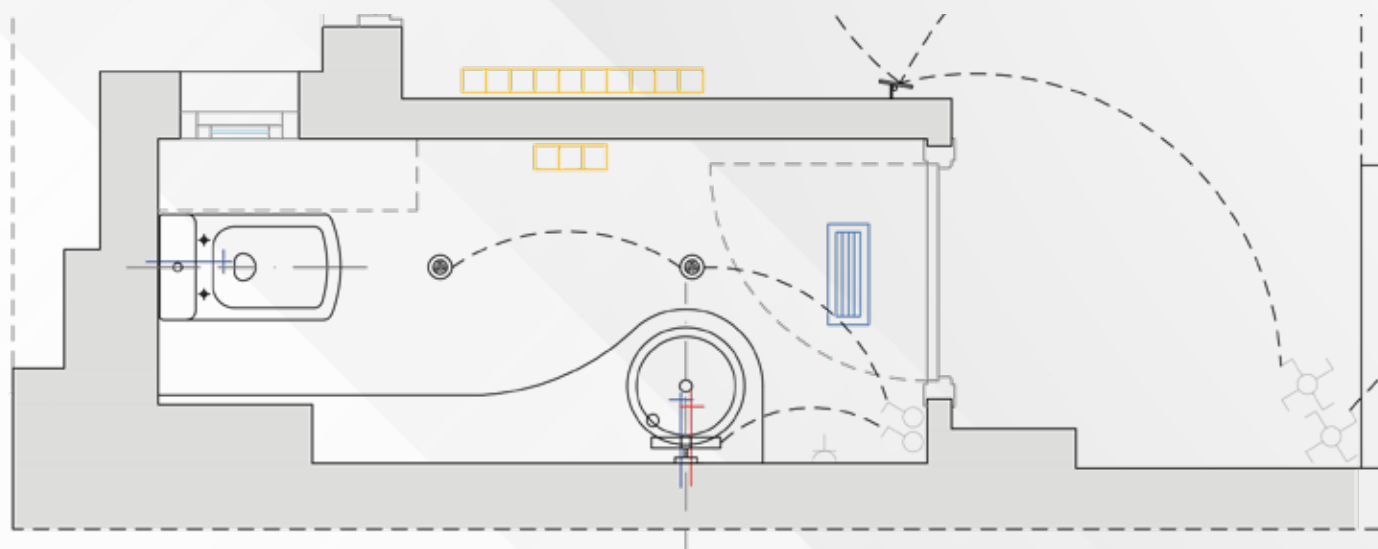
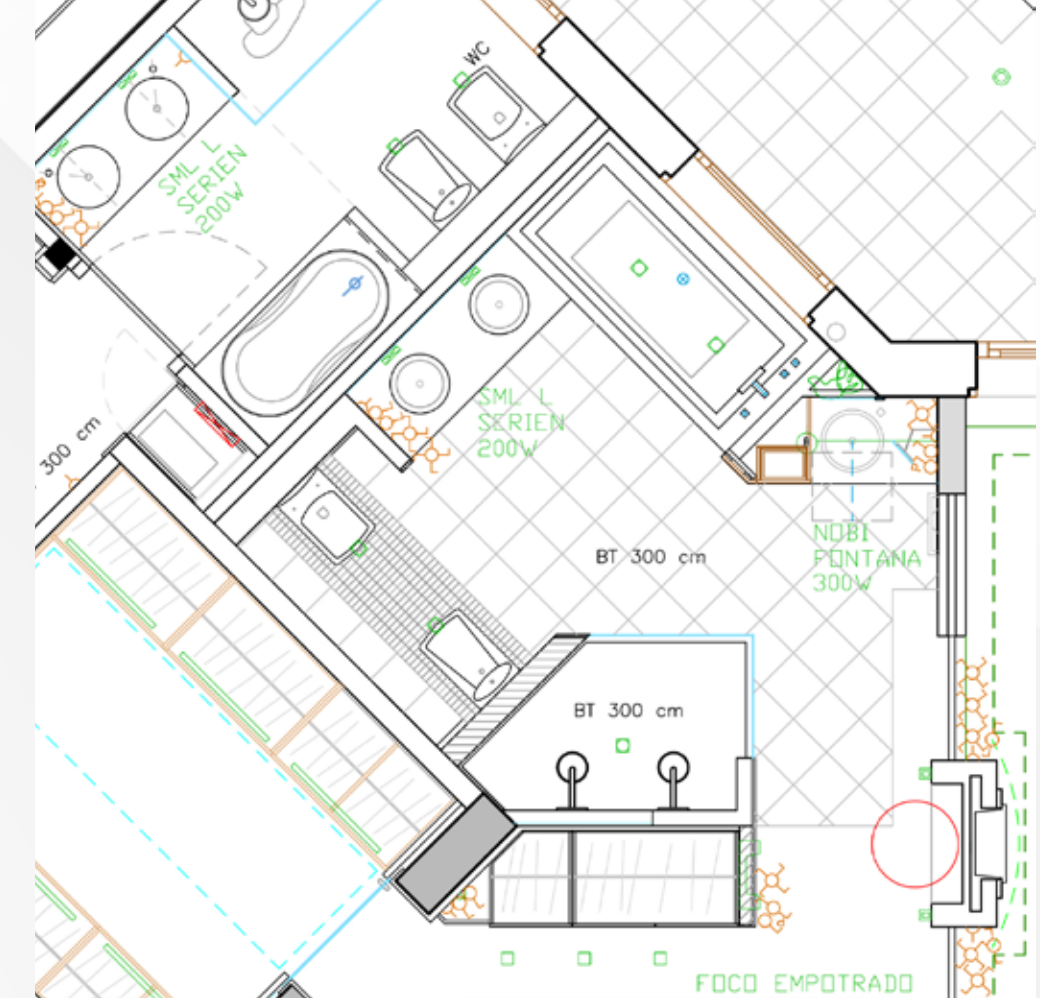
Simplicity means elegance



A 105 m² loft.
Design and Interior Design-
Geobiology-Feng Shui



An intimate comfort



A 2,6 m² guests' bathroom.
Interior Design and Feng Shui



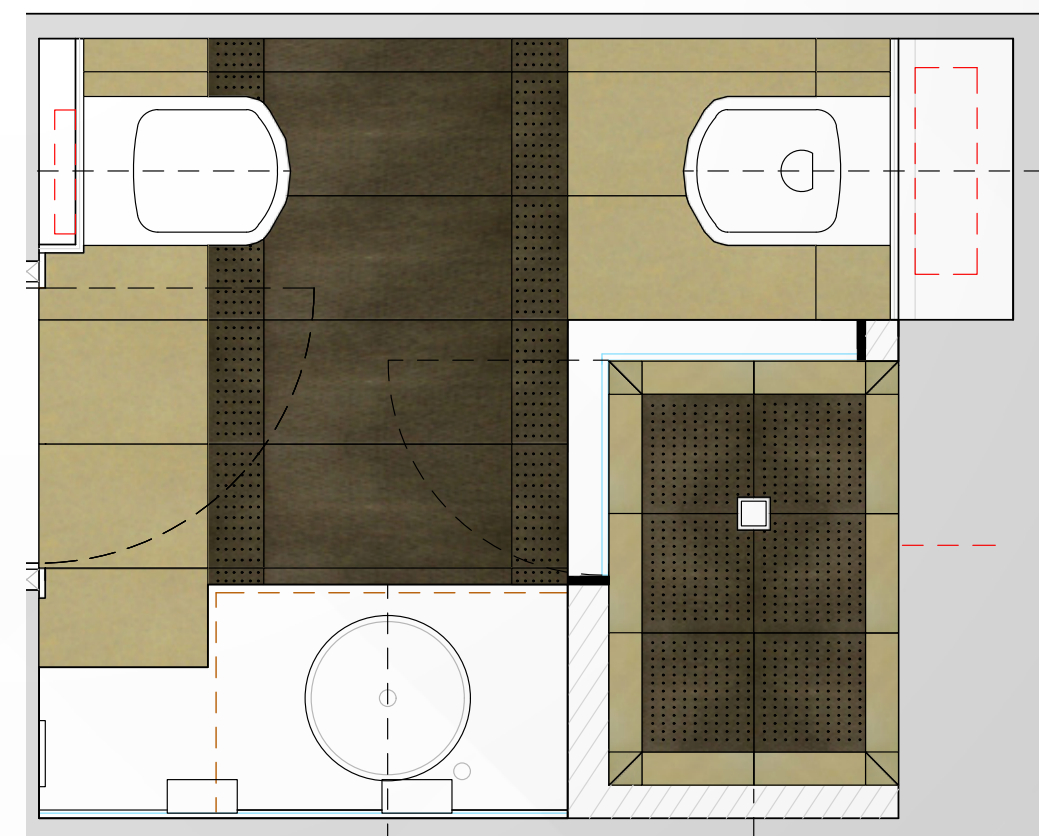
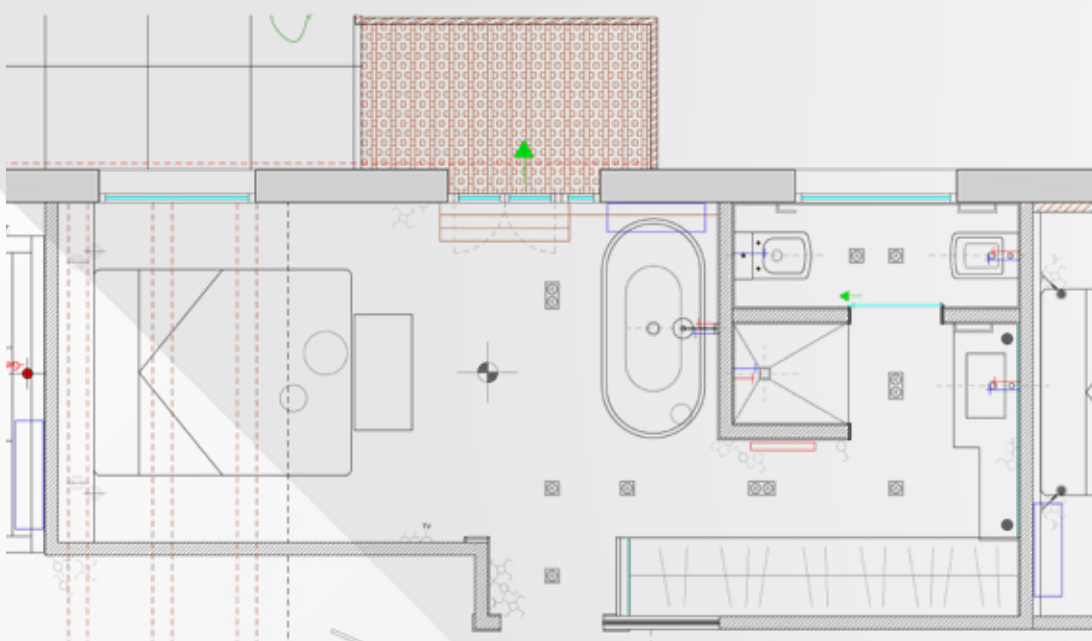
A 8,8 m² guests' bathroom.
Interior Design and Feng Shui



A 15 m² whole bathroom.
Interior Design and Feng Shui

Personalized spaces with character

A 11 m² whole bathroom.
Interior Design and Feng Shui



A 4 m² guests' bathroom.
Interior Design and Feng Shui



A 7,7 m² whole bathroom.
Interior Design and Feng Shui

Studyroom with bookcase and original painting

A 360 m² loft.
Design and Interior Design-
Geobiology-Feng Shui



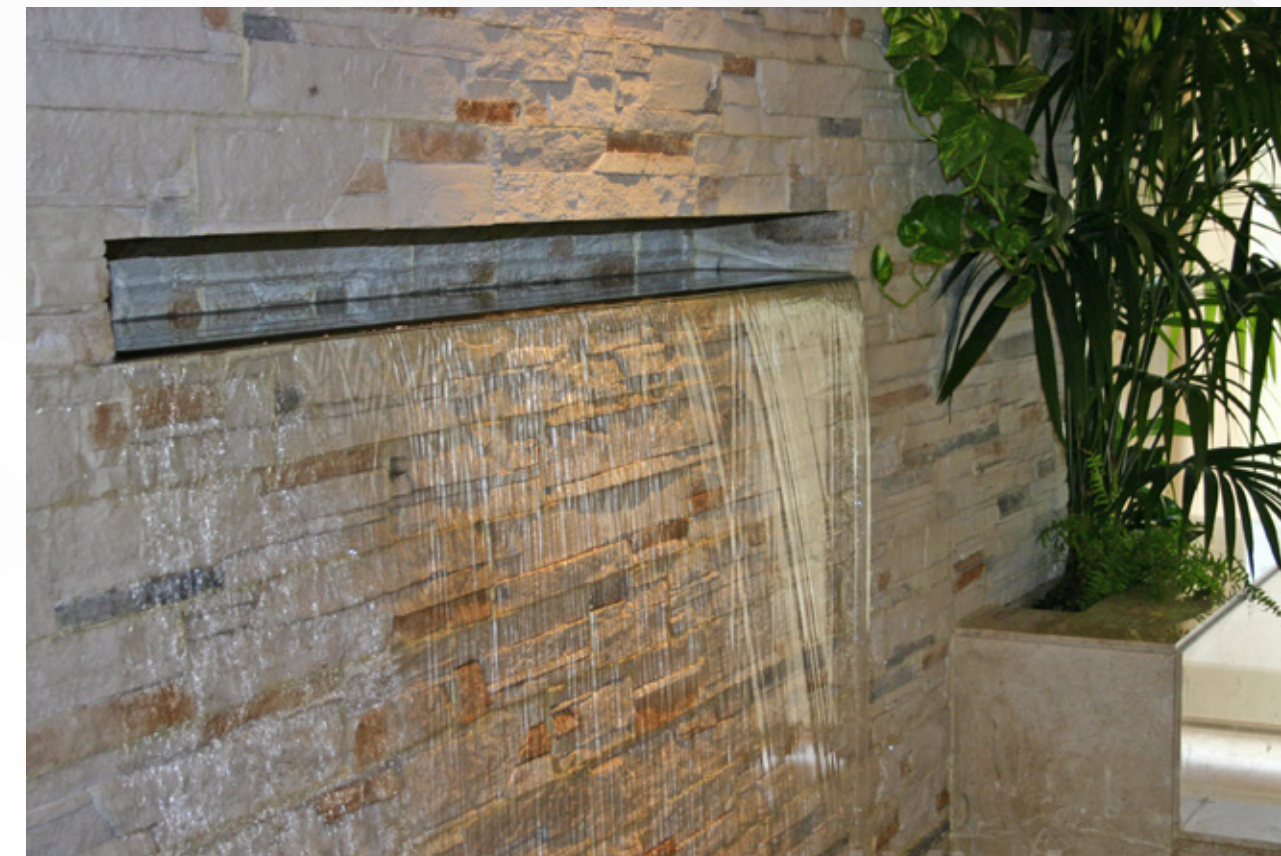
Captivating details



Hall with secrétaire and original painting



3 m tall wooden sliding door.
Design and Interior Design and Feng Shui



Wall fountain. Design and Interior Design and Feng Shui



Bookcase with sliding leather doors and drawers



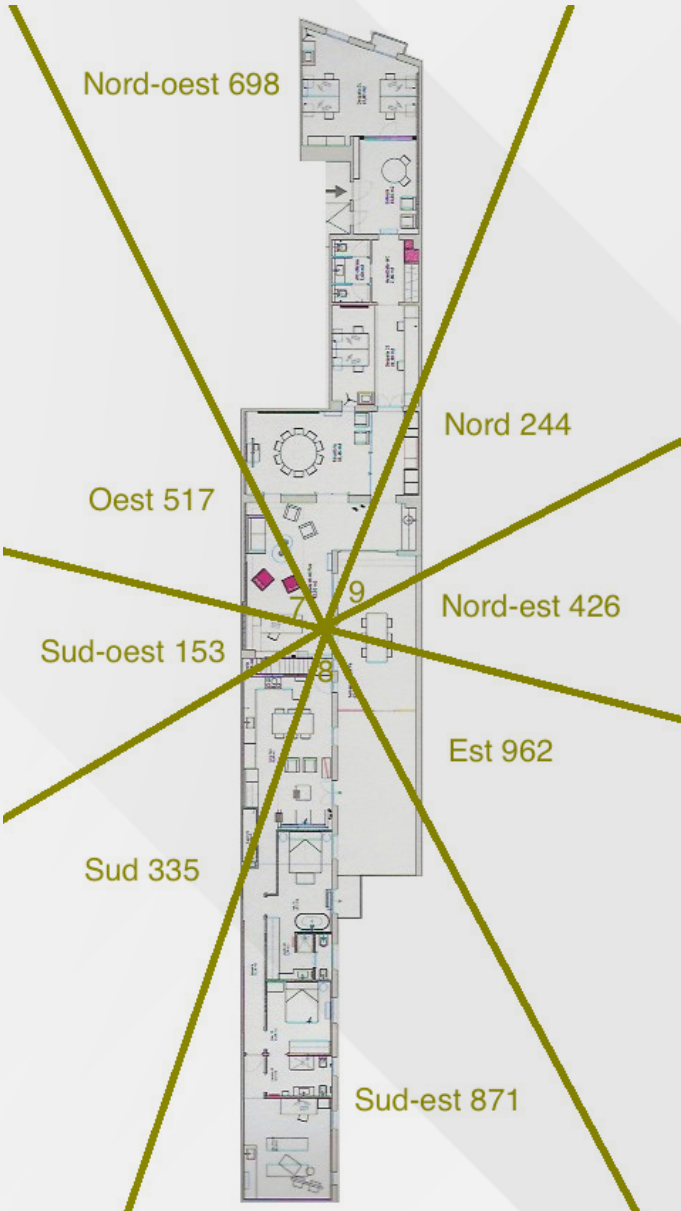
Refuges for dreaming
and resting



A 500 m² detached house. Design and Interior
Design-Geobiology-Feng Shui



A 360 m² loft. Design and Interior
Design-Geobiology-Feng Shui



Feng Shui study

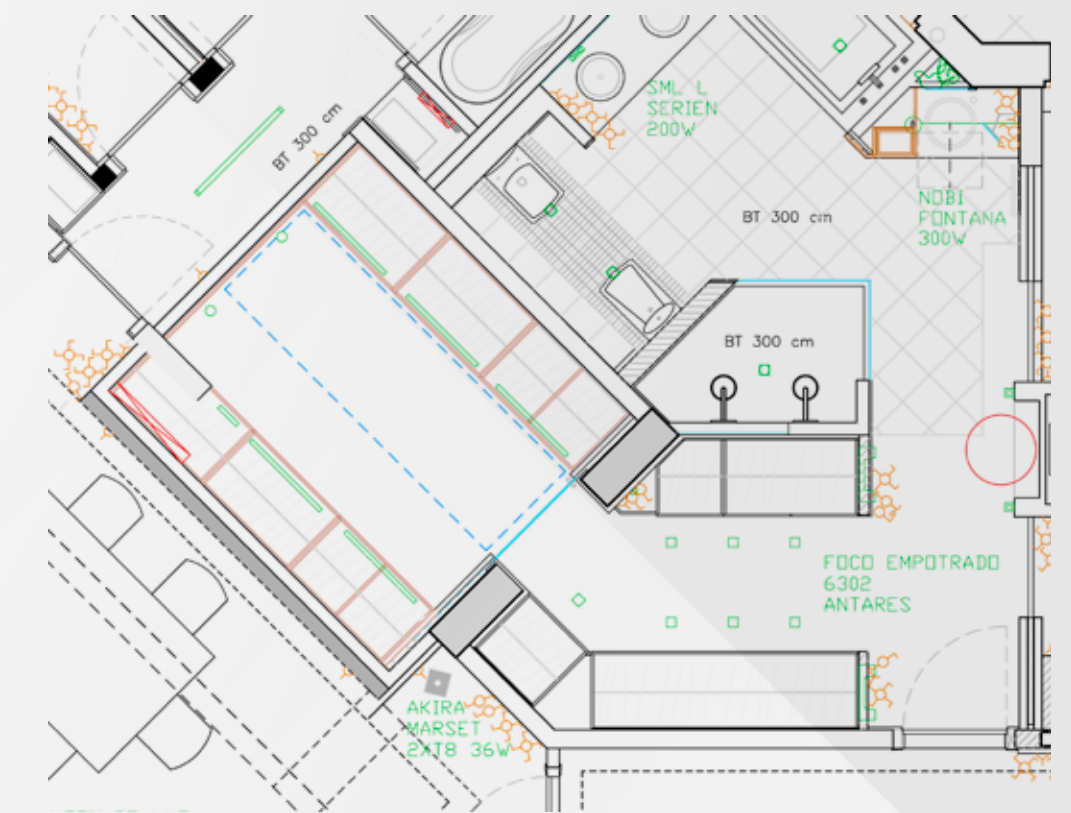
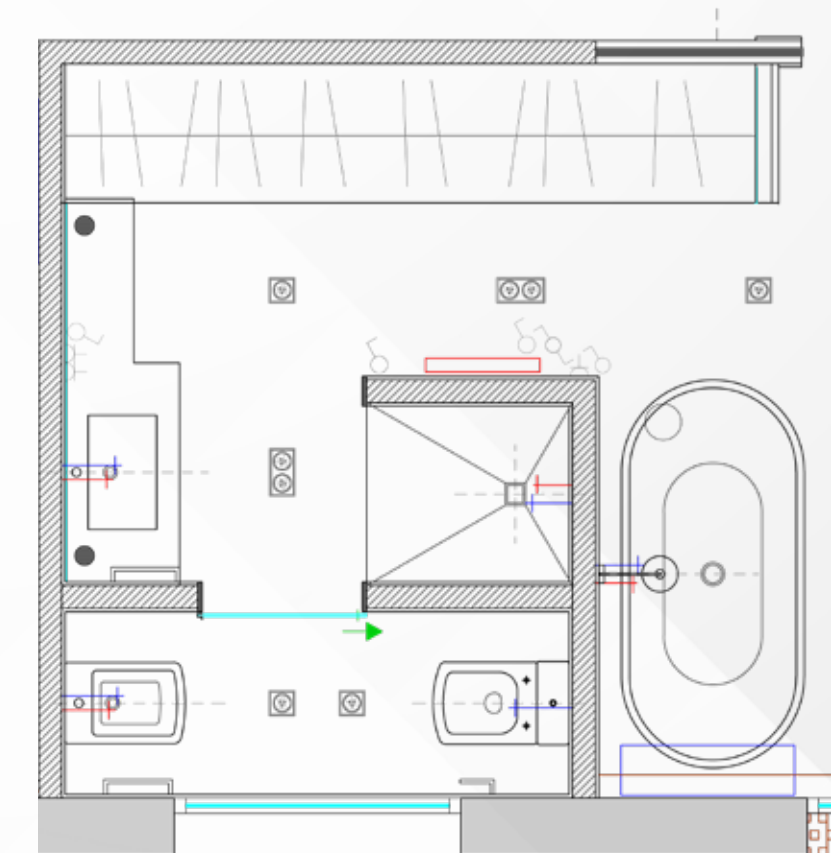
Walk-in wardrobe with transparency



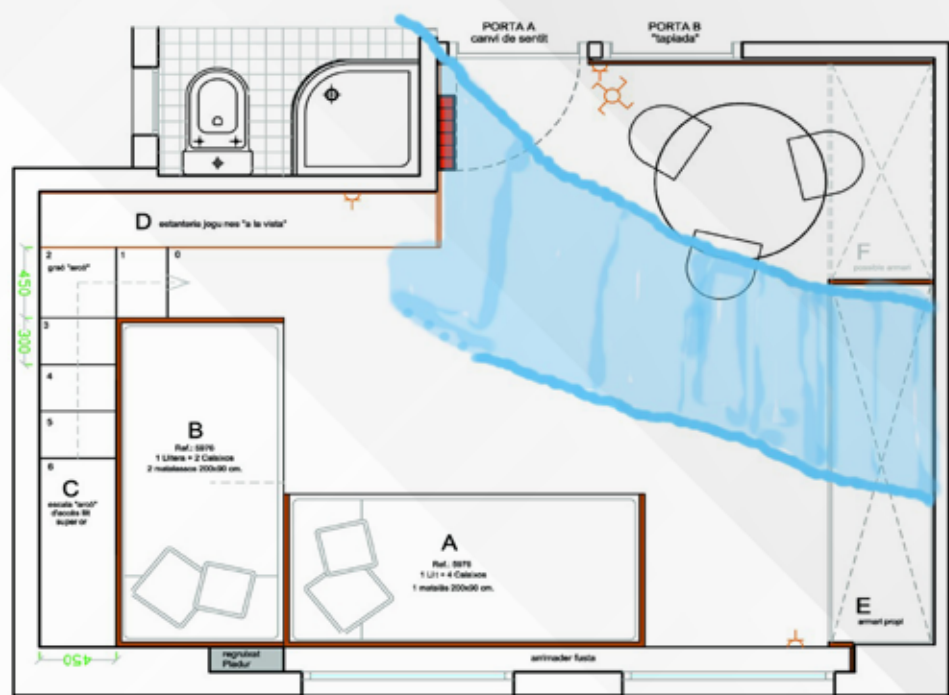
A 360 m² loft. Design and Interior Design-Geobiology-Feng Shui



A 300 m² detached house. Design and Interior Design-Geobiology-Feng Shui



Funny spaces for the youngest ones



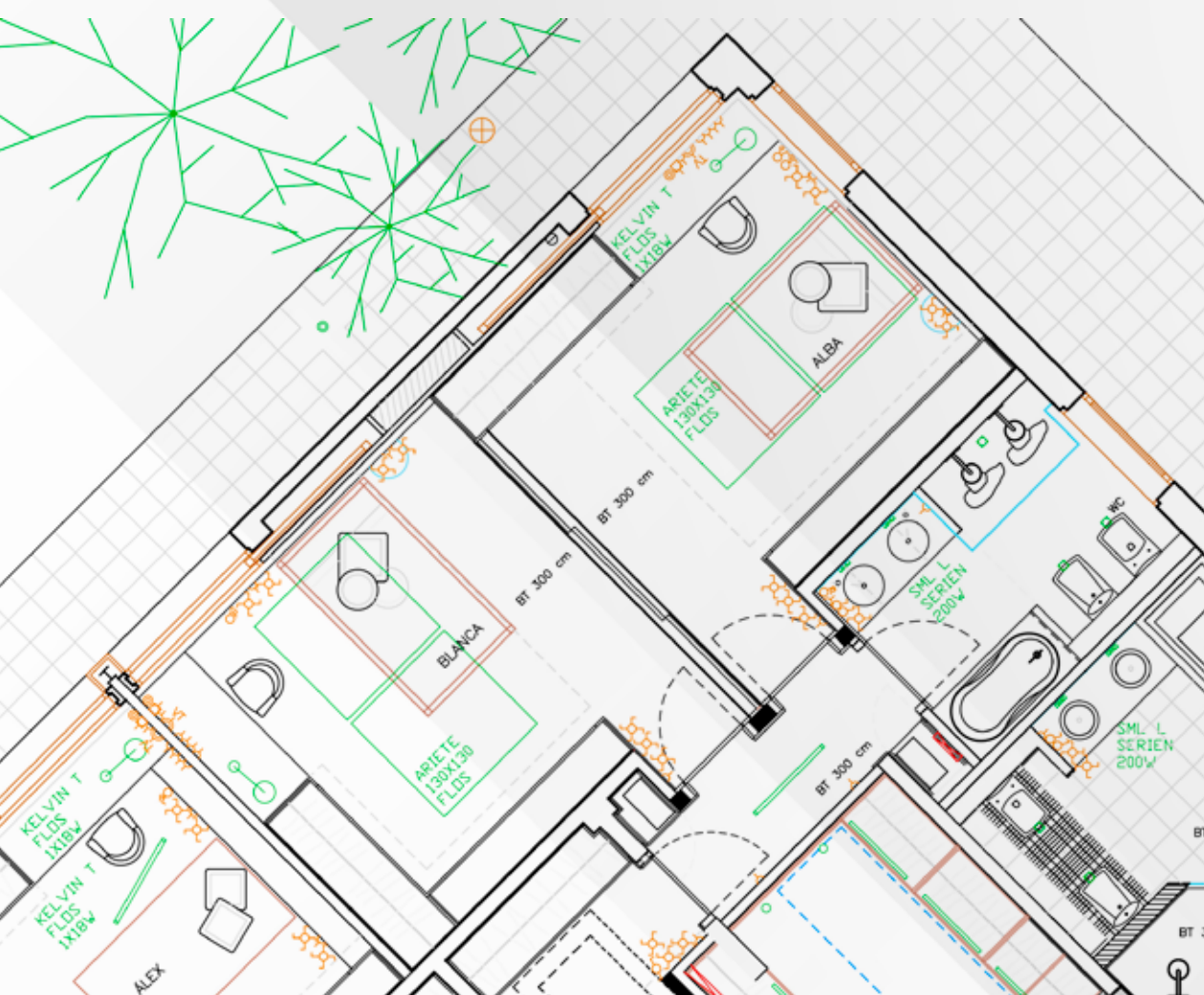
A 96 m² apartment.
Design and Interior Design-
Geobiology-Feng Shui

Geobiology study



A 300 m² detached house.
Design and Interior Design-Geobiology-Feng Shui

For sleeping
and playing



A 500 m² detached house. Design and Interior Design-Geobiology-Feng Shui. Two bedrooms of 40 m² separated by three sliding doors of three meters high

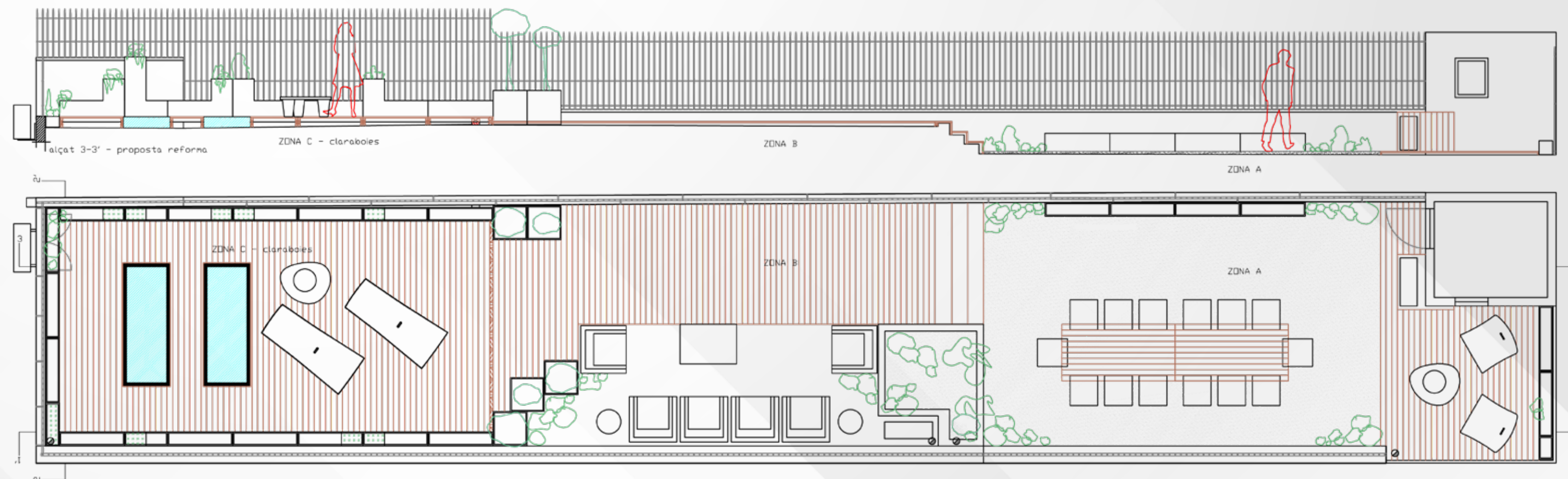


A 360 m² loft. Design and Interior Design-Geobiology-Feng Shui

A piece of nature within our own space



A 115 m² duplex + 115 m² terrace.
Feng Shui for terraces and
landscaping study



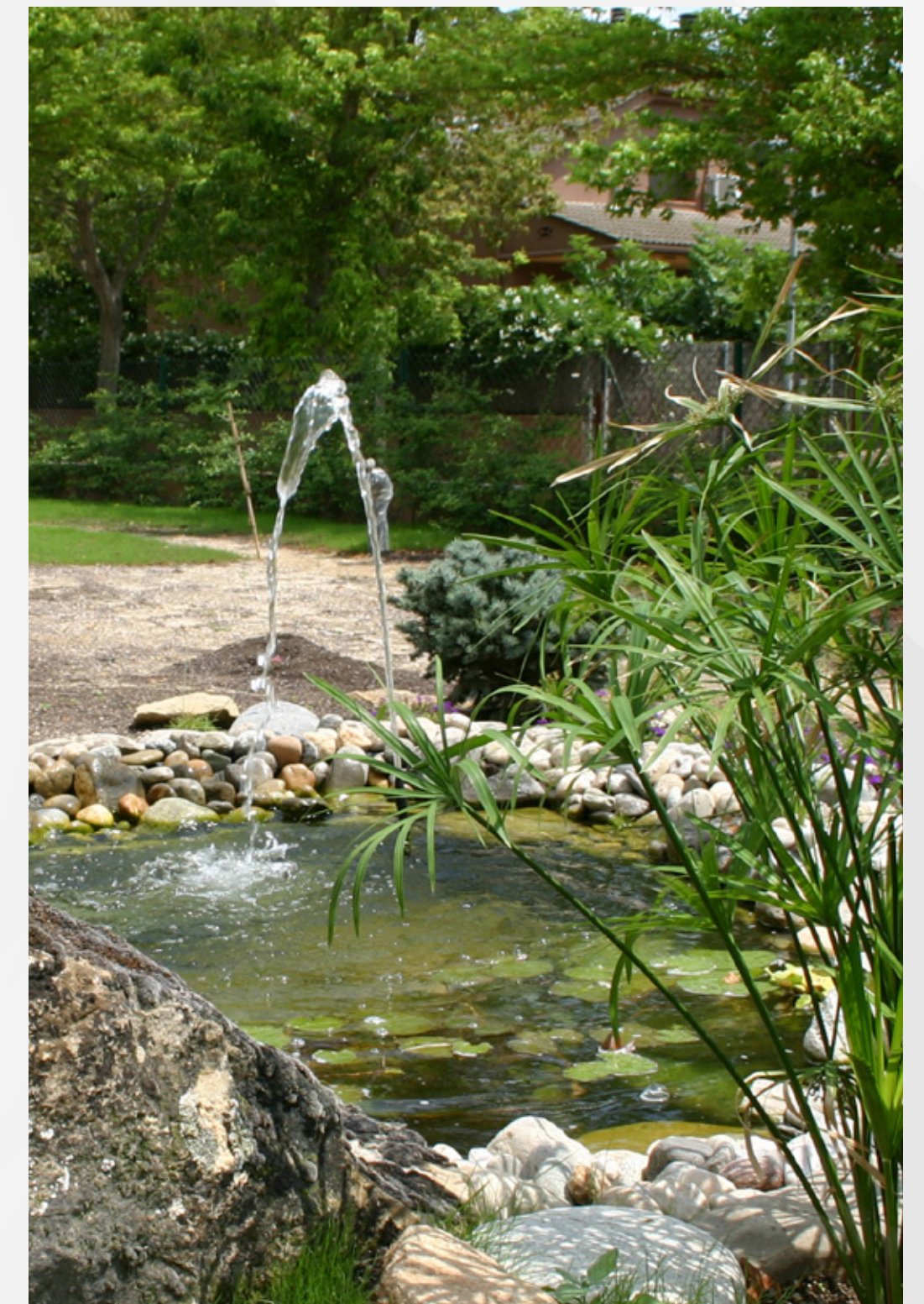
Green dreams outdoors



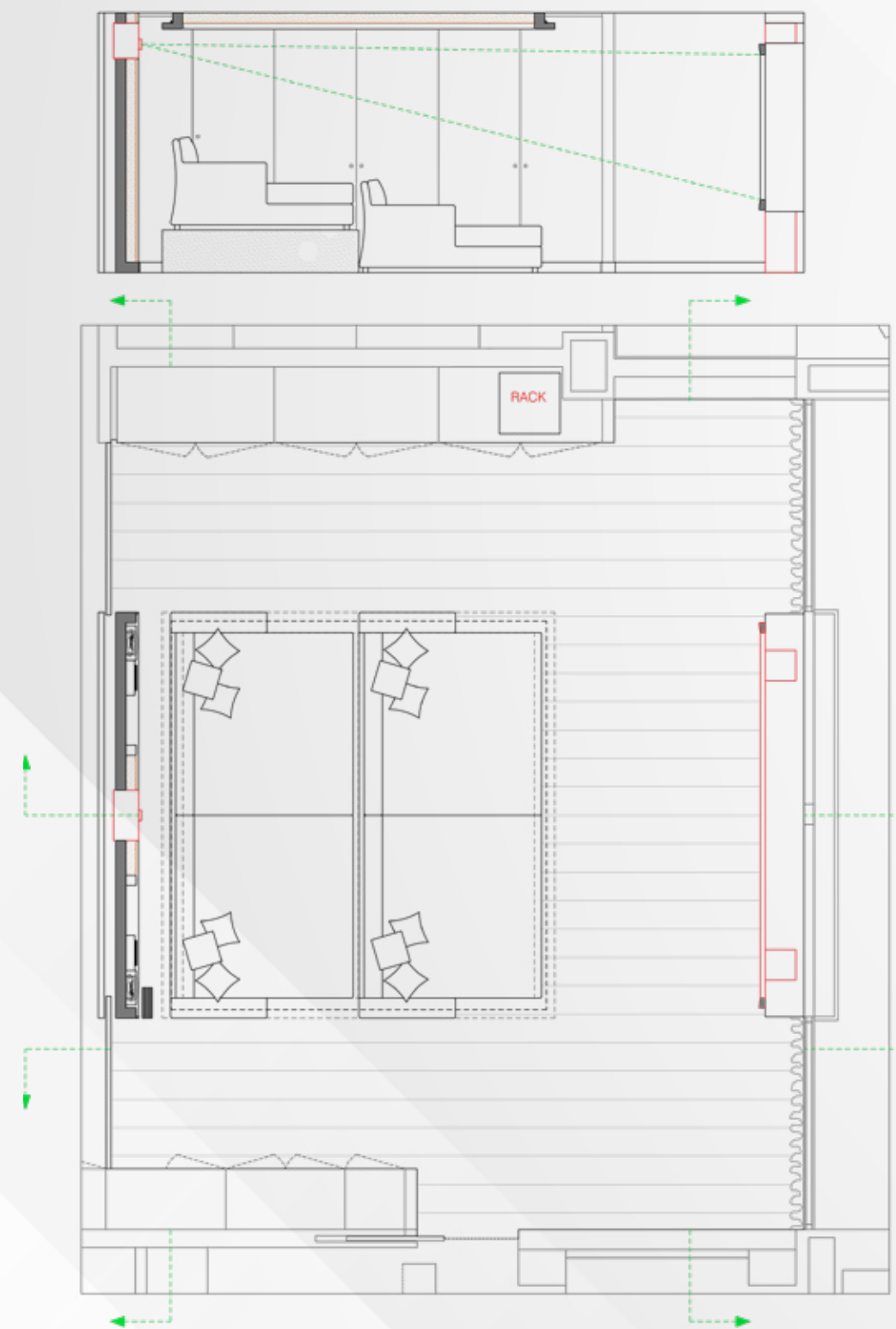
A 260 m² semi-detached house and 350 m² garden. Feng Shui for gardens and Geobiology for urban gardens



A 850 m² detached house and 600 m² garden. Feng Shui for gardens and for water areas



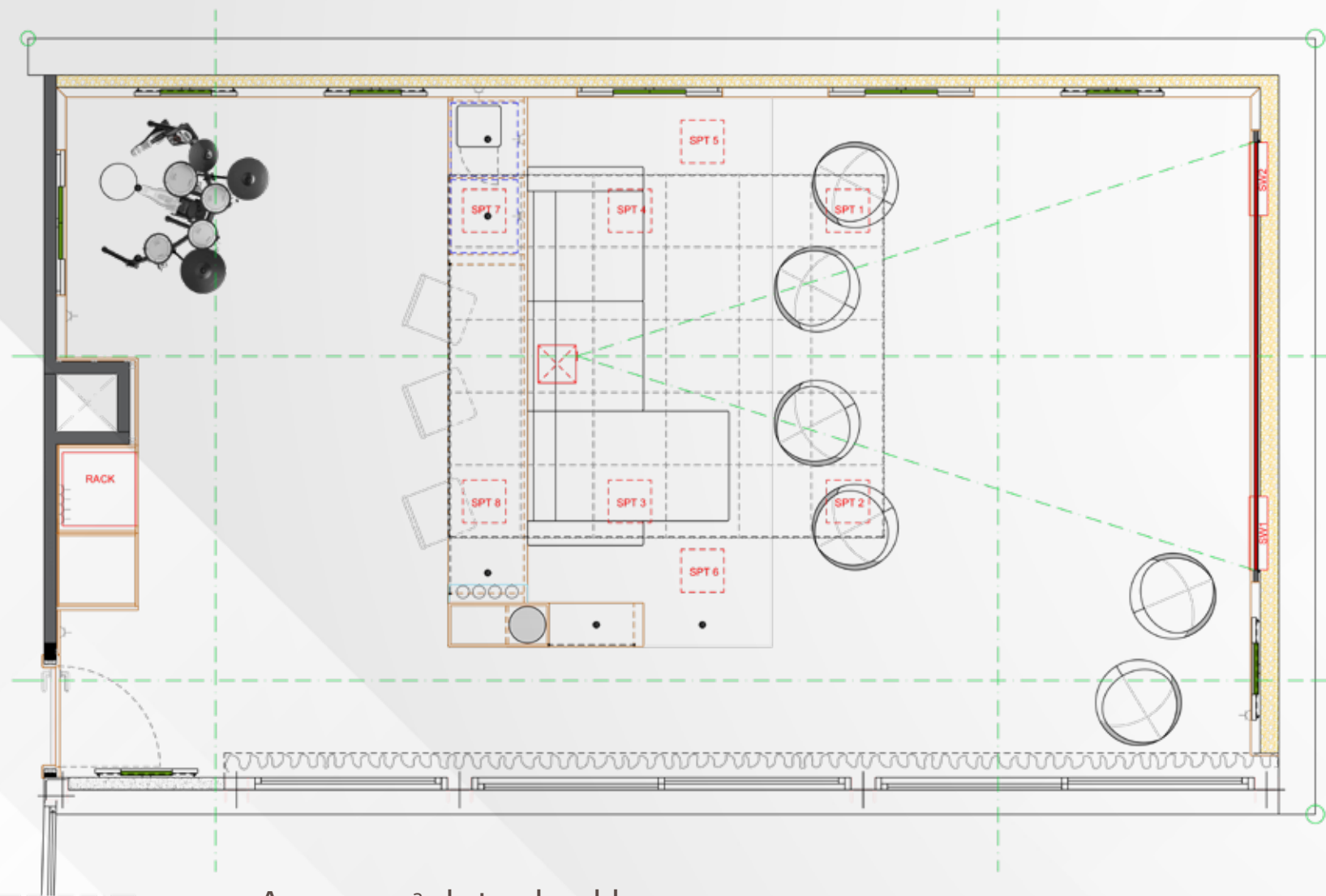
Home cinema to enjoy with the family and friends



A 500 m² detached house. Design and Interior Design.
A 60 m² Home Cinema room



You are the protagonist
for a while

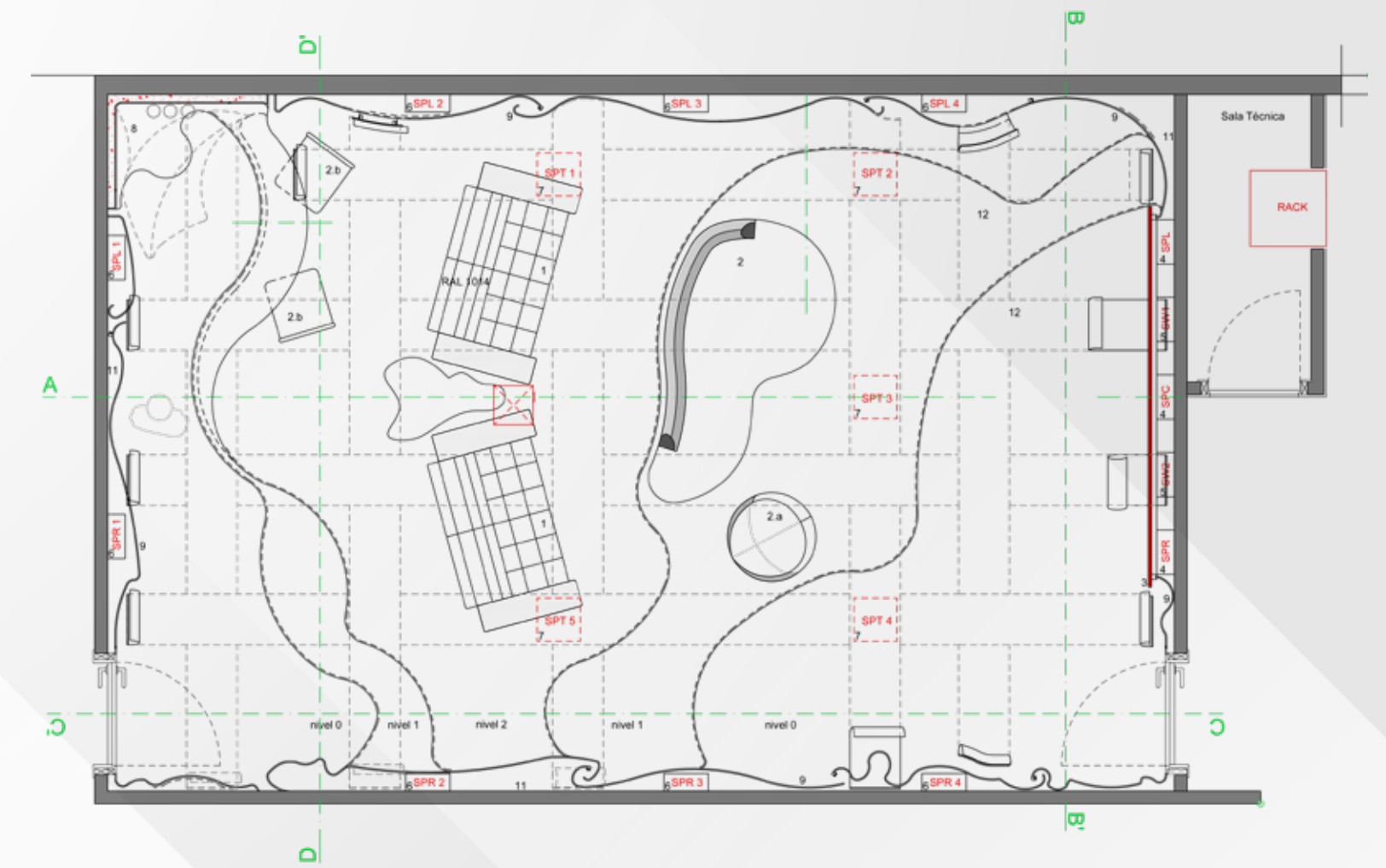


A 900 m² detached house.
Design and Interior Design.
A 56 m² Home Cinema room
and childrens' playroom



Creativity combines with technology

A 1.500 m² detached house. Design and Interior Design. A 90 m² Home Cinema room.



Museums and immersive spaces

Museums and exhibitions stand on their own right within the field of interior design. In the cases which we are showing they combine with the latest technology. Thus, new environments are created which become a new world of imagination. The result is much more than just a space: it is an enthralling experience. This is the outcome of our intense cooperation with Grup Transversal's creative team.



Espacio Pikolin Zaragoza, immersive space which combines a thematic exhibition with a huge projection space which expands to infinity.



Vallbona de les Monges, museumization of the monastery. The furniture, which pretends to be antique, is combined with amazing virtual projections with hologrammatic effects. A trip through time.



Ultreia, Camino de Santiago (Way of Saint James) visitor centre. A sophisticated but cosy space which tries to concentrate the medieval History of the Way as it goes through the city of Pamplona. Modernity hosts the most ancient History.





Museu Marítim de Barcelona. Grand pieces, immersive spaces, great scenographical set ups... all inside an impressive building dating back to the 14th. Century. The exhibition was devised to make the visitor live History: three centuries of sailing the Mediterranean and the Atlantic.

Castell de Castelldefels: the History of piracy in the Mediterranean. Immersive spaces, interactive spaces, great projections; all these as the visitors make their way through a castle turned into a funny and unforgettable experience.



Criteria and sensibility to create
more comfortable and suggestive spaces

ebc

EULÀLIA BORRUT Carrer Hospital, 131, principal · 08001 Barcelona · ebc@eulaliaborrutcasas.com · +34 673 710 313